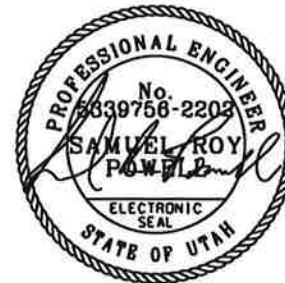


LOGAN CITY

500 NORTH WATER LINE

JANUARY 2017

BID SET



THIS ELECTRONIC SEAL IS ONLY VALID IF DIGITALLY SIGNED BELOW.

X 
Digitally signed by Samuel Powell
DN: cn=Samuel Powell, o=J-U-B
Engineers, Inc, ou,
email=spowell@jub.com, c=US
Date: 2017.01.19 15:13:12 -07'00'

PROJECT NO. 57-16-044

INDEX TO SHEETS

GENERAL

G-001	COVER SHEET
G-002	GENERAL NOTES, VICINITY MAP, AREA MAP
G-101	SURVEY CONTROL

CIVIL

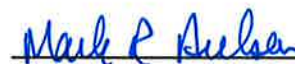
C-201	CULINARY WATER LINE / ELECTRICAL CONDUIT
C-202	CULINARY WATER LINE / ELECTRICAL CONDUIT
C-203	CULINARY WATER LINE / ELECTRICAL CONDUIT
C-401	ADDITIONAL VALVE LOCATIONS
C-501	CIVIL DETAILS

AREA MAP



THESE PLANS HAVE BEEN REVIEWED AND
APPROVED BY THE FOLLOWING:

PUBLIC WORKS DIRECTOR:


MARK NIELSEN, P.E. 1-19-2017
DATE

WATER DIVISION MANAGER:


PAUL LINDHARDT, P.E. 1-19-2017
DATE

CITY ENGINEER:


BILL YOUNG, P.E. 1/19/17
DATE



J-U-B ENGINEERS, INC.

1047 South 100 West, Suite 180, Logan, UT 84321
p 435 713 9514 f 435 713 9503 w www.jub.com

OTHER J-U-B COMPANIES



NOTICE AND DISCLAIMER

THE PLANS AND/OR SPECIFICATIONS (DOCUMENTS) ARE THE PROPERTY OF J-U-B ENGINEERS, INC. ("J-U-B") AND BY USING THE DOCUMENTS YOU AGREE TO BE BOUND BY THE TERMS AND CONDITIONS IN THIS NOTICE AND DISCLAIMER.
THE USER SHALL NOT (i) DISSEMINATE THE DOCUMENTS OR ANY PART THEREOF TO OTHERS WITHOUT THE WRITTEN CONSENT OF J-U-B, OR (ii) USE THE DOCUMENTS OR ANY PART THEREOF FOR ANY USE OTHER THAN AS DESIGNATED HEREIN FOR THE INTENDED PROJECT. THE DOCUMENTS ARE NOT INTENDED FOR USE IN CREATING DTM FOR GRADING OR EARTHWORK, SURVEY STAKING LAYOUT (UNLESS SPECIFICALLY IDENTIFIED AS SUCH IN THE DOCUMENTS), OR PROPERTY BOUNDARY LAYOUTS.
J-U-B AND ITS AGENTS SHALL NOT BE LIABLE FOR ANY DAMAGES OR CLAIMS ARISING OUT OF THE UNAUTHORIZED USE OR MISUSE OF THE DOCUMENTS, OR ANY PART THEREOF, WHETHER SUCH DAMAGE OR CLAIM IS BASED IN CONTRACT, TORT OR OTHERWISE. THE USER HEREBY RELEASES AND SHALL DEFEND, INDEMNIFY AND HOLD J-U-B AND ITS AGENTS HARMLESS FROM ANY DAMAGES OR CLAIMS ARISING OUT OF, OR RELATED IN ANY WAY TO, THE USER'S UNAUTHORIZED USE OR MISUSE OF THE DOCUMENTS, OR ANY PART THEREOF.
IF THE DOCUMENTS ARE PROVIDED IN ELECTRONIC FORMAT, THE ELECTRONIC DATA SOURCES OF THE DOCUMENTS ARE PROVIDED WITH NO WARRANTY OF ANY KIND, WHETHER EXPRESS OR IMPLIED, INCLUDING WITHOUT LIMITATION, ANY REPRESENTATION OR WARRANTY OF ACCURACY, QUALITY, COMPLETENESS, COMPATIBILITY WITH SYSTEMS, DRAWINGS NOT PRINTING TO SCALE, TRANSLATION ERRORS, AND OTHER PROBLEMS WITH USE.

LAST UPDATED: 1/18/2017

SHEET NUMBER:


G-001



1047 South 100 West,
Suite 180
Logan, UT 84321
Phone: 435.713.9514
Fax: 435.713.9503
www.jub.com

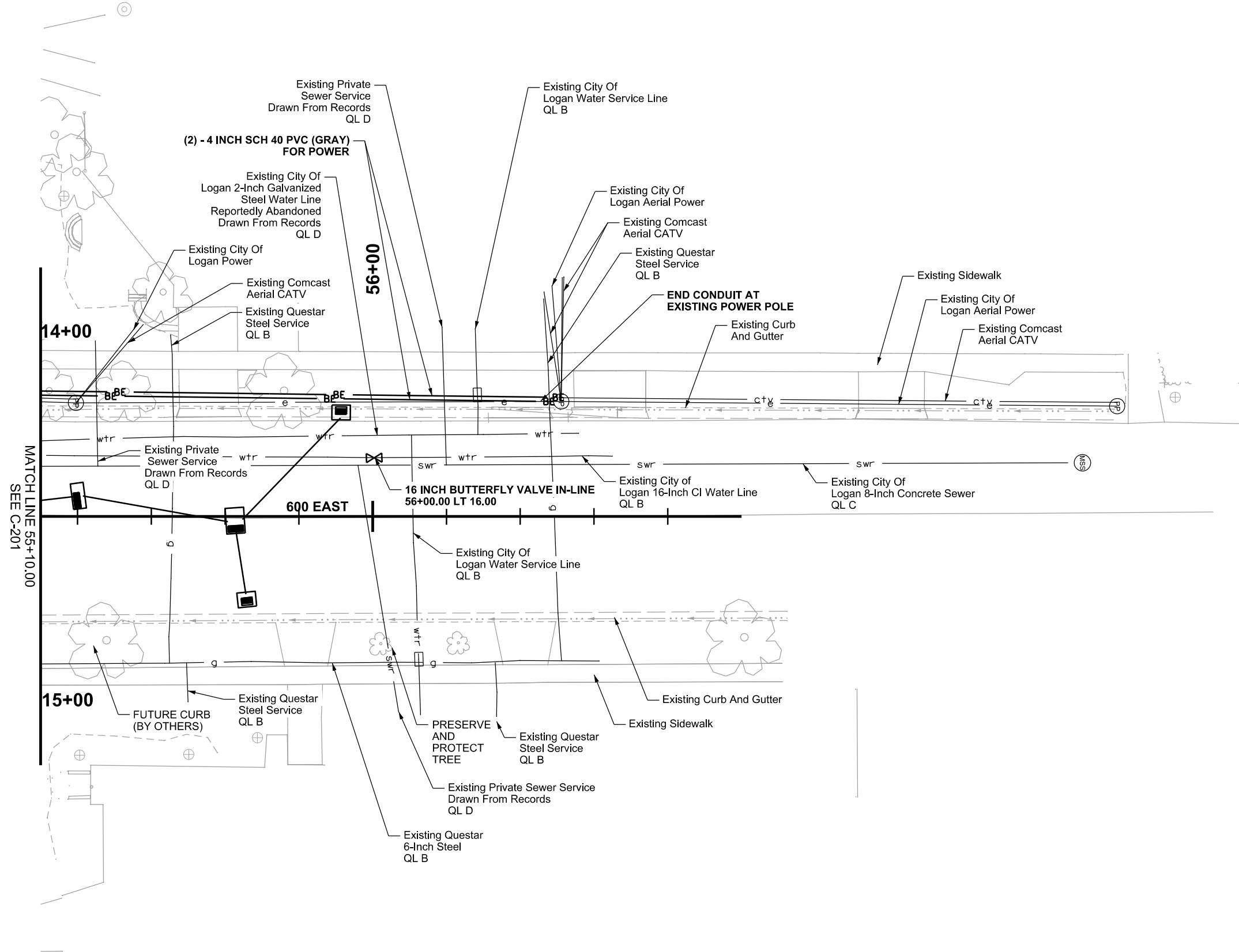
[illegible]

LOGAN CITY
CULINARY WATER LINE
ELECTRICAL CONDUIT

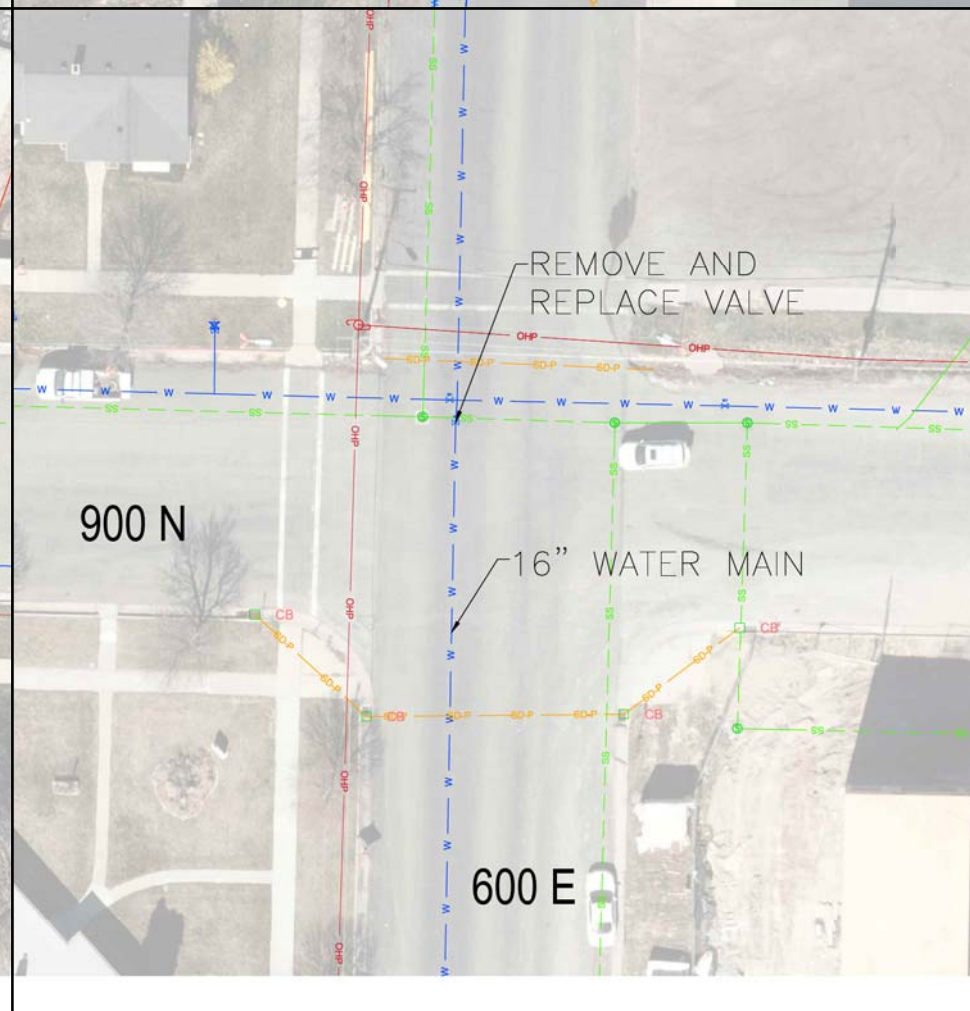
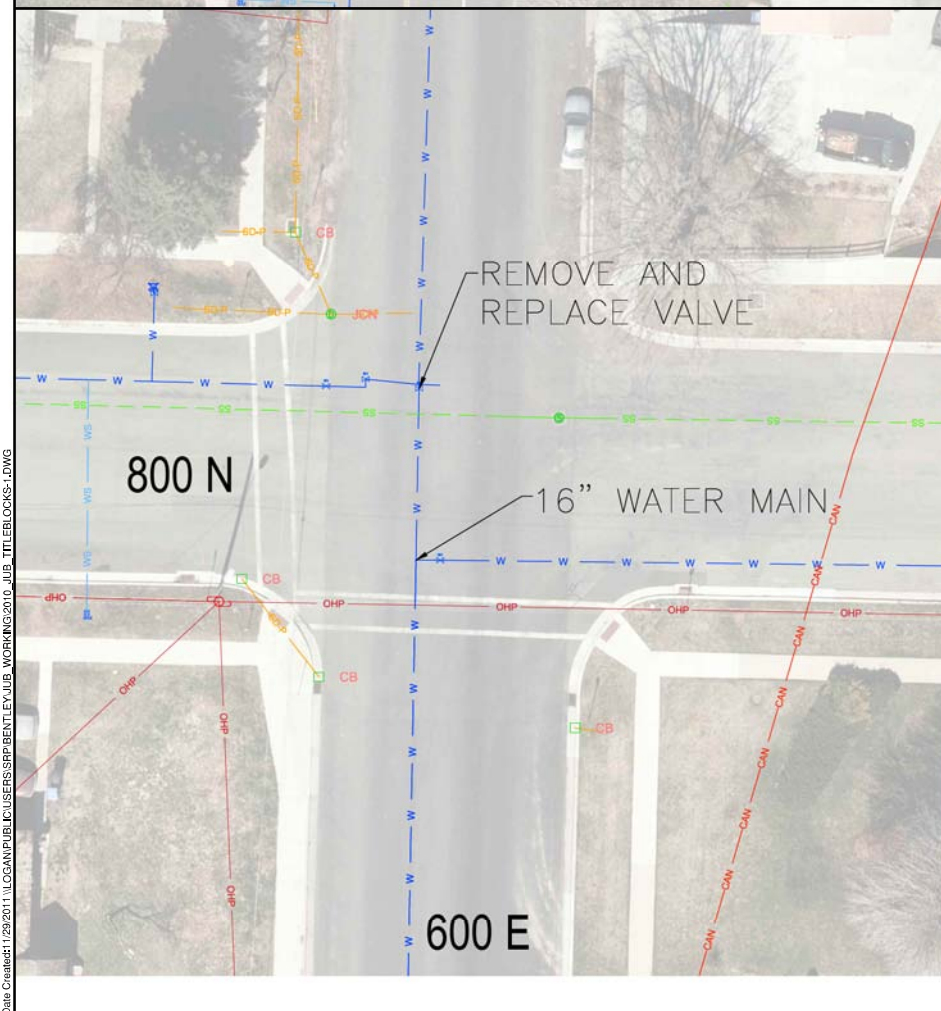
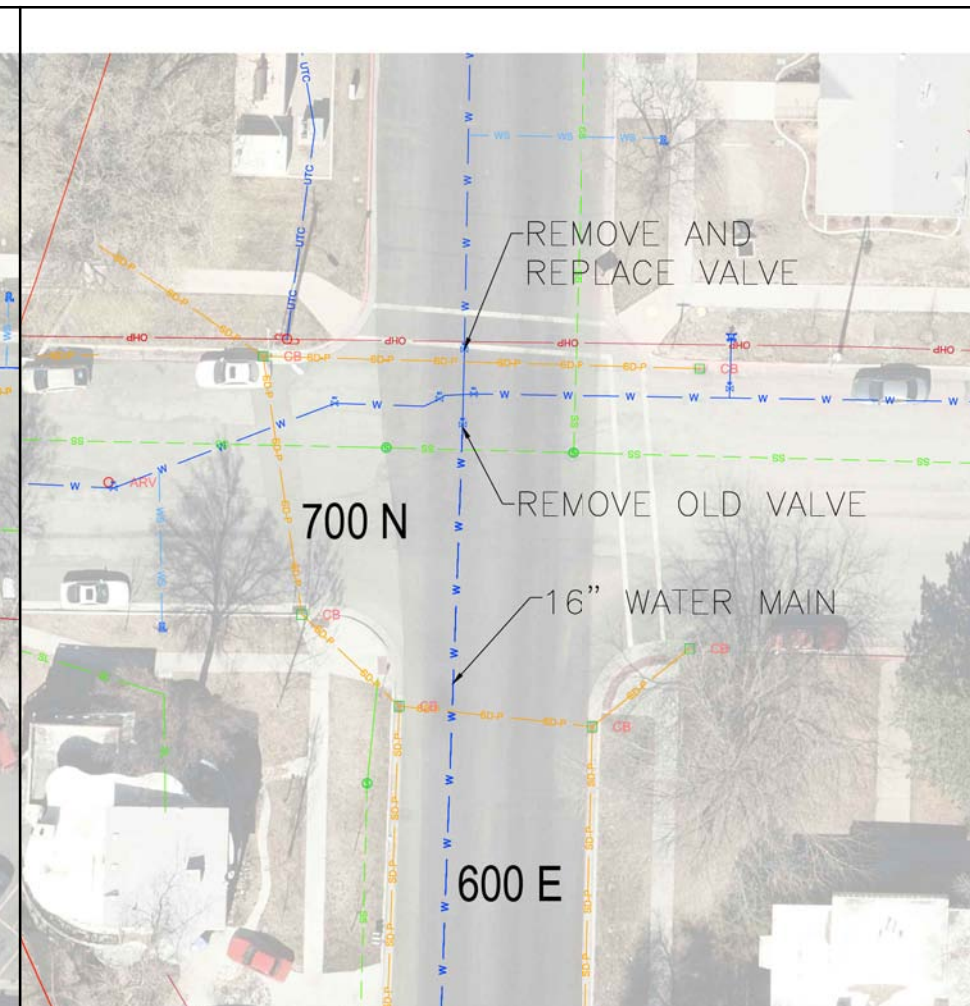
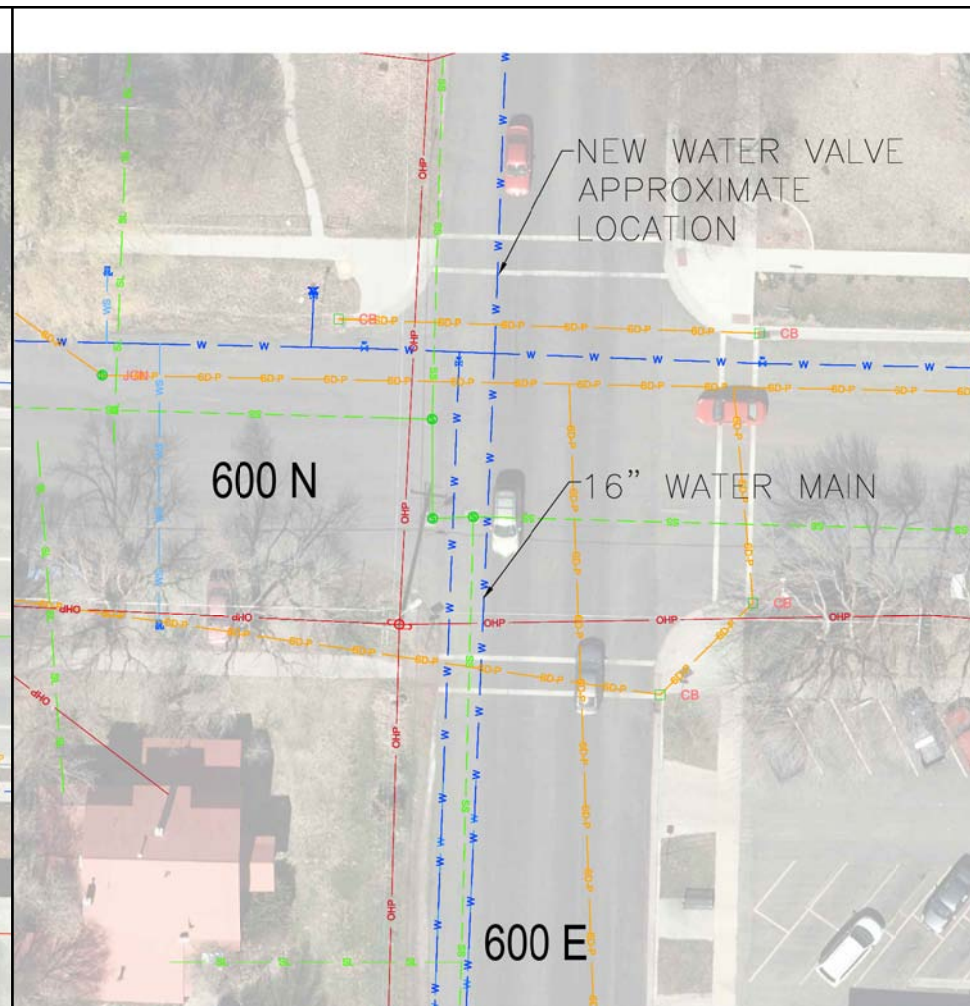
2010_JUB_TITLEBLOCKS-1
PROJ. #: 57-16-044
IN BY: SRP
IN BY: SRP
CKED BY: CBS
 NOT FULL SIZE, IF NOT ONE INCH, SCALE ACCORDINGLY
UPDATED: 12/9/2011

HEET NUMBER:

-203



Plot Date: --- Plotted By: Samuel Powell
Date Created: 11/29/2011 \\JOGAN\PIR\IC\USERS\SRP\RENT\FY11R WORKING\2010_11R_TIT FRLOCKS-1.DWG



NOTES:

1. ALL NEW VALVE LOCATIONS ARE APPROXIMATE.
COORDINATION WITH LOGAN CITY PROJECT MANAGER FOR
EXACT LOCATION \ DURING PROJECT



J-U-B ENGINEERS, INC.
1047 South 100 West,
Suite 180
Logan, UT 84321
Phone: 435.713.9514
Fax: 435.713.9503
www.jub.com

BID SET




1/19/2017

THIS DOCUMENT, AND THE IDEAS AND DESIGNS INCORPORATED HEREIN, AS AN INSTRUMENT OF PROFESSIONAL SERVICE, IS THE PROPERTY OF J-U-B ENGINEERS, Inc. AND IS NOT TO BE USED, IN WHOLE OR PART, FOR ANY OTHER PROJECT WITHOUT THE EXPRESS WRITTEN AUTHORIZATION OF J-U-B ENGINEERS, Inc.

	REVISION			
NO.	DESCRIPTION	R/V	APR	DATE

500 NORTH WATER LINE
LOGAN CITY

ADDITIONAL VALVE LOCATIONS

FILE : 2010_JUB_TITLEBLOCKS-1
JUB PROJ. #: 57-16-044
DRAWN BY: SRP
DESIGN BY: SRP
CHECKED BY: CBS

ONE INCH
AT FULL SIZE, IF NOT ONE
INCH, SCALE ACCORDINGLY
LAST UPDATED: 12/9/2011
SHEET NUMBER:

C-401

